

**Legend - Wall Legend**

- Internal Partition System
- Precast Concrete panel
- Blockwork
- Fire Rated Wall -120/90
- Fire Rated Wall -120/120

**Legend - General legend**

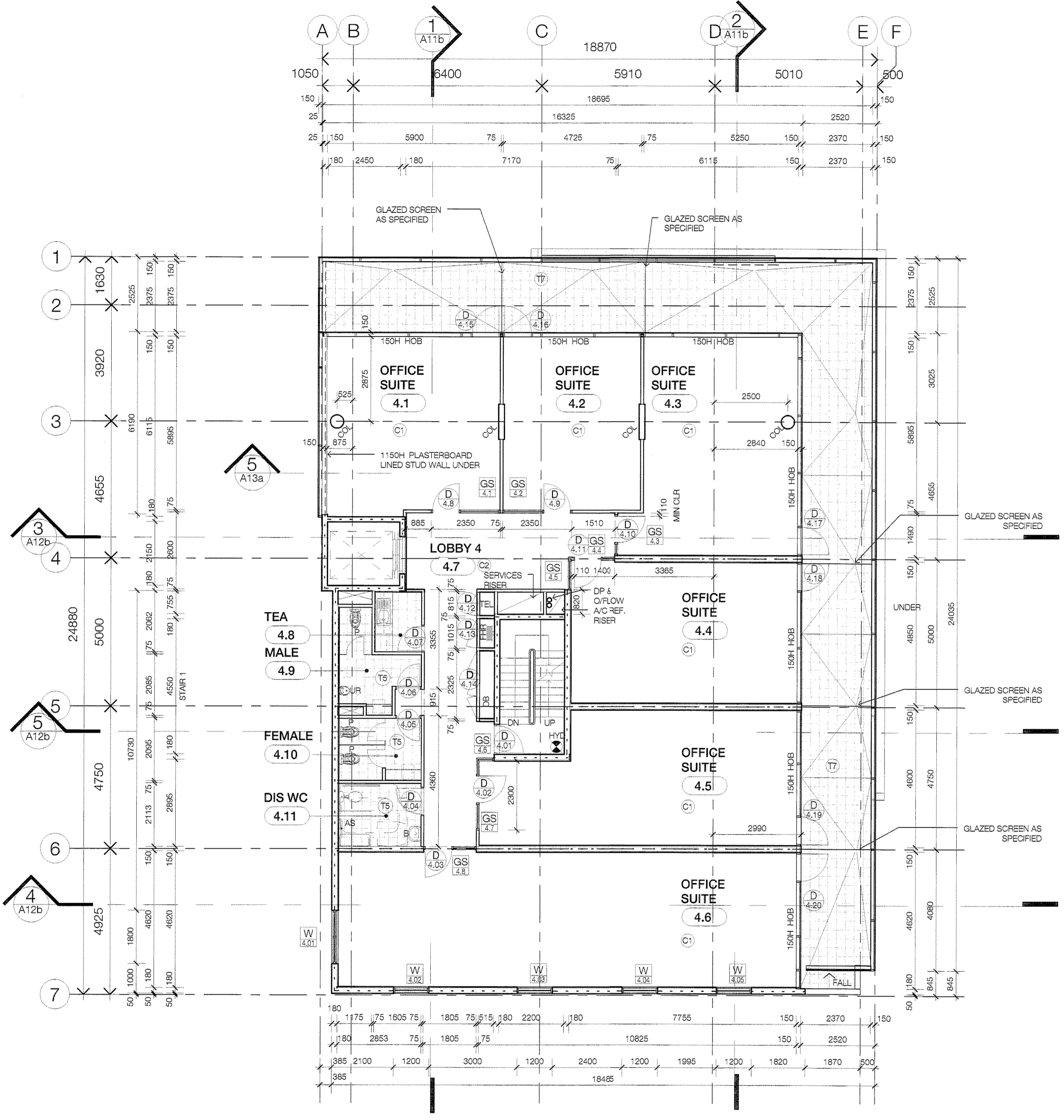
- A/C AIR CONDITIONER
- BOL BOLLARD
- C CARPET
- CLM CLADDING, METAL
- COL COLUMN
- CO CONCRETE UNSEALED
- CSS CEILING SUSPENSION SYSTEM
- DP DOWN PIPE
- FC FIBRE CEMENT SHEET
- FW FLOOR WASTE
- FGL GLAZING SYSTEM
- GIT GREASE INTERCEPTOR TRAP
- GLS GLASS
- HR HAND DRYER
- HR HAND RAIL
- HYD FIRE HYDRANT
- MAT ENTRY FLOOR MATT
- MST METAL STUD WALL
- PLB PLASTERBOARD
- RMT ROOFING MATERIAL
- RWH RAIN WATER HEAD
- RWB BOX GUTTER
- SD SKIRTING DUCT
- T TILING - FLOOR TILES
- TVR TIMBER VENEER
- S/S STAINLESS STEEL
- WM WATER METER

- T1 FLOOR FINISH
- W WINDOW TYPE
- W# WINDOW NUMBER
- D DOOR NUMBER

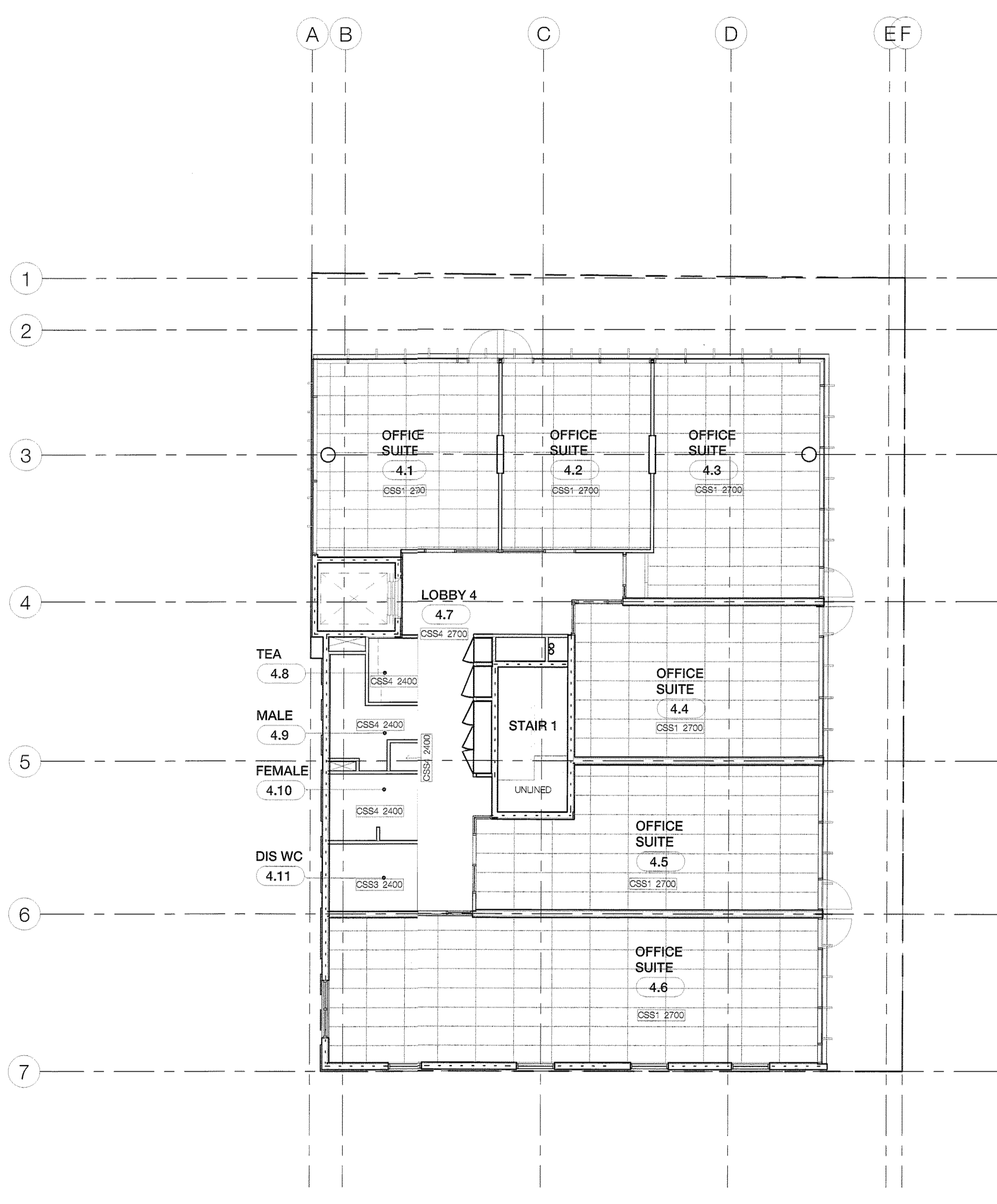
NOTE  
REFER MECHANICAL ENGINEERS DRAWINGS & SPECIFICATION FOR ALL MECHANICAL FIXTURES & FITTINGS  
REFER ELECTRICAL ENGINEERS DRAWINGS & SPECIFICATION FOR ALL ELECTRICAL FIXTURES & FITTINGS

**CEILING LEGEND**

- CSS1 600 x 1200mm DROP IN MINERAL FIBRE CEILING TILES
- CSS3 10mm AQUACHEK PLASTERBOARD WITH RECESSED EDGES FOR FLUSH JOINTING
- CSS4 10mm GYPROCK PLASTERBOARD WITH RECESSED EDGES FOR FLUSH JOINTING
- CSS5 FEATURE TIMBER LINING AS DETAILED



**1 Level 4 Floor Plan**  
1 : 100



**2 Level 4 Reflected Ceiling Plan**  
1 : 100

RECEIVED  
13 NOV 2009  
BY: \_\_\_\_\_

**CONSTRUCTION ISSUE**

Revision	Date
a General Revisions	29.09.2009

Issued	Date

**Clarke Hopkins Clarke**  
366 Nicholson Street  
Fitzroy Victoria Australia 3065  
Telephone (03) 9419 4340  
Facsimile (03) 9419 4345  
Email studio@chc.com.au  
www.chc.com.au

Scale	1 : 100
Date	29.09.2009
Drawn	JFK, TC
Architect	DML

Project  
Commercial Office  
373 King Street Melbourne

Drawing  
Level 4 Plans

Drawing No.  
**0622/A06a**